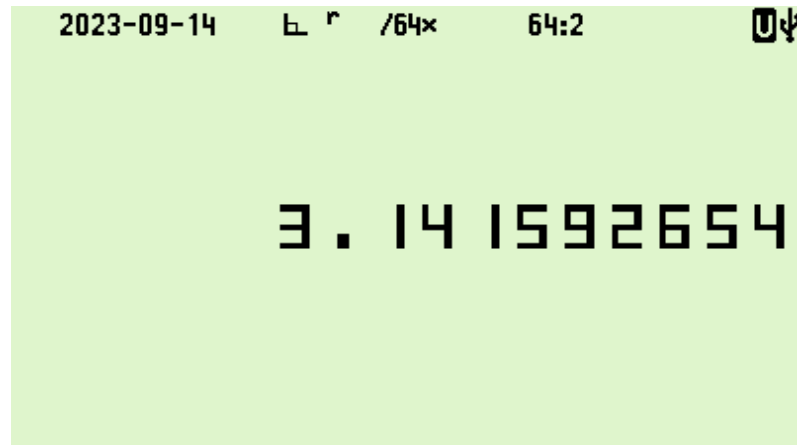


Ref. page	HP35
-----------	------

To start HP35-mode, enter: RCL 7 35 ENTER 1972  
(H P 35 ENTER 1972)

To return to normal, enter:  $\sqrt{x}$  47 ENTER 2023  
(C 47 ENTER 2023)



In HP35-mode, this configuration is set as indicated ; restored by RCLCFG 35 on return

Label	Fullname	Setting value
STOCFG	Store configuration	35
(none)	Set big display font size	
(none)	Clear pending key input	
CLRMOD	Clear modes	
CLSTK	Clear stack	
$\pi$	pi (put pi in X)	
i REAL	Input real	
SIG	Significant digits notation	9
MyM	MyMenu shown	OFF
HOME	HOME menu shown	OFF
RNG	Range	99
SDIGS	Set significant digits	16
DSTACK	Display stack registers	1
RAD	Set ADM to RAD	
SSIZE4	Stack size 4	
CPXRES0	Real results	
SPCRES0	Normal results	
eRPNoff	Entry RPN off	
fg.OFF	Menu fg-highlighting Off	
n/a	Clear any pending TI	
IPGRP	IP group size	3
FPGRP	FP group size	3
IPGRP1	IP first group size	0
IPGRP1x	IP first group extension	0
IPART	Select IP separator	NONE
FPART	Select FP separator	NONE
RADIX	Select radix	WDOT •
R $\uparrow$	Roll up	Assigned to C47.33.13 ( $\sqrt{y}$ )
USER	USER mode	ON

This mode was inspired by the classic LED look:

